

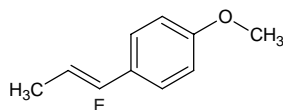
# trans-anethole

## trans-アネトール

Formula C<sub>10</sub>H<sub>12</sub>O

Mol. Wt. 148.20

CAS No. 4180-23-8



SEQ No. 175 フェノールエーテル類

FEMA No. 2086

JECFA No. 217

	JFFMA	JECFA	FCC
Chemical name	trans-anethole	trans-Anethole	Anethole
Content (NLT)	98.0 % (GC)	99.0 %	99.0 % GC(M-1b)
Refractive index	1.557-1.563 (n <sub>20D</sub> )	1.559-1.562 (n <sub>20D</sub> )	1.557-1.562 (n <sub>20D</sub> )
Specific gravity	0.981-0.991 (d <sub>20/20</sub> )	0.983-0.988 (d <sub>25/25</sub> )	0.983-0.988 (d <sub>25/25</sub> )
Acid value (NMT)			
Melting/Congeealing point			SP: NLT 20°C
Angular/Specific rotation			AR: -0.15 to 0.15°
Heavy metals (NMT)			
Solubility in ethanol		1 ml in 2 ml 96% alcohol	1 mL in 2 mL alc
Other requirements			Phenol-passes test.
Identification*	IR : 1,2,3,6 MS : 3,4,5 NMR : 3,6	IR	IR

### \*References

- 1: Joint FAO/WHO Expert Committee on Food Additive (JECFA)
- 2: Food Chemicals Codex (FCC)
- 3: 有機化合物のスペクトルデータベース SDBS(独立行政法人産業技術総合研究所)
- 4: Wiley's Registry of Mass spectral Database
- 5: NIST/EPA/NIH Mass Spectral Library
- 6: Sigma-Aldrich