

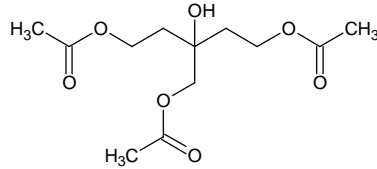
triethyl citrate

トリエチル シトレート

Formula C₁₂H₂₀O₇

Mol. Wt. 276.28

CAS No. 77-93-0



SEQ No. 2415 エステル類

FEMA No. 3083

JECFA No. 629

	JFFMA	JECFA	FCC
Chemical name	triethyl citrate	Triethyl citrate	Triethyl Citrate
Content (NLT)	98.0 % (GC)	99 %	99.0~100.5 % chem
Refractive index	1.439-1.445 (n _{20D})	1.440-1.444 (n _{20D})	1.440-1.444 (n _{20D})
Specific gravity	1.138-1.145 (d _{20/20})	1.138-1.139 (d _{25/25})	1.135-1.139 (d _{25/25})
Acid value (NMT)	1.0	0.02% as citric acid	0.02 as citric acid
Melting/Congeealing point			
Angular/Specific rotation			
Heavy metals (NMT)		10 ppm	Lead : 2mg/kg
Solubility in ethanol			
Other requirements		Water: max. 0.25%	Water max. 0.25%
Identification*	IR : 1,3,6 MS : 3,4,5 NMR : 3	IR	

*References

- 1: Joint FAO/WHO Expert Committee on Food Additive (JECFA)
- 2: Food Chemicals Codex (FCC)
- 3: 有機化合物のスペクトルデータベース SDBS(独立行政法人産業技術総合研究所)
- 4: Wiley's Registry of Mass spectral Database
- 5: NIST/EPA/NIH Mass Spectral Library
- 6: Sigma-Aldrich