

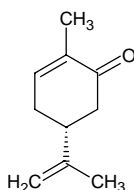
l-carvone

l-カルボン

Formula C₁₀H₁₄O

Mol. Wt. 150.22

CAS No. 6485-40-1



SEQ No. 345 ケトン類

FEMA No. 2249

JECFA No. 380

	JFFMA	JECFA	FCC
Chemical name	l-carvone	l-Carvone	L-Carvone
Content (NLT)	97.0 % (GC)	97 %	97.0 % GC(M-1b)
Refractive index	1.495-1.501 (n _{20D})	1.495-1.499 (n _{20D})	1.495-1.502 (n _{20D})
Specific gravity	0.959-0.965 (d _{20/20})	0.956-0.960 (d _{25/25})	0.956-0.960 (d _{25/25})
Acid value (NMT)			
Melting/Congeealing point			
Angular/Specific rotation	AR: -62 to -57° (α 20D)	OR: -62 to -57°	AR: -62 to -57°
Heavy metals (NMT)			
Solubility in ethanol		1 ml in 2 ml 70% alcohol	1 mL in 2 mL 70% alc
Other requirements			
Identification*	IR : 1,2,3,6 MS : 3,4,5 NMR : 3,6	IR	IR

*References

- 1: Joint FAO/WHO Expert Committee on Food Additive (JECFA)
- 2: Food Chemicals Codex (FCC)
- 3: 有機化合物のスペクトルデータベース SDBS(独立行政法人産業技術総合研究所)
- 4: Wiley's Registry of Mass spectral Database
- 5: NIST/EPA/NIH Mass Spectral Library
- 6: Sigma-Aldrich